

First Day Info

Math 115 Reasoning with Data

Linda Green
greenl@email.unc.edu

Topics

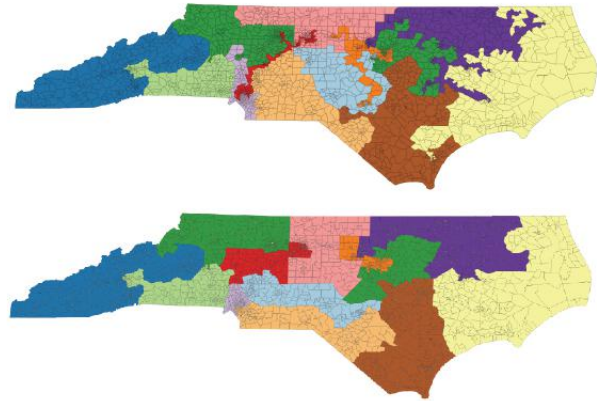
This course will focus on reasoning with data.

We will use math, statistics, and data to address societal problems and make personal decisions.

We will answer questions like:

- How can we tell if gerrymandering has occurred?
- What fraction of the population needs to be vaccinated to control coronavirus outbreaks?
- From a financial perspective, is worthwhile to go to law school?

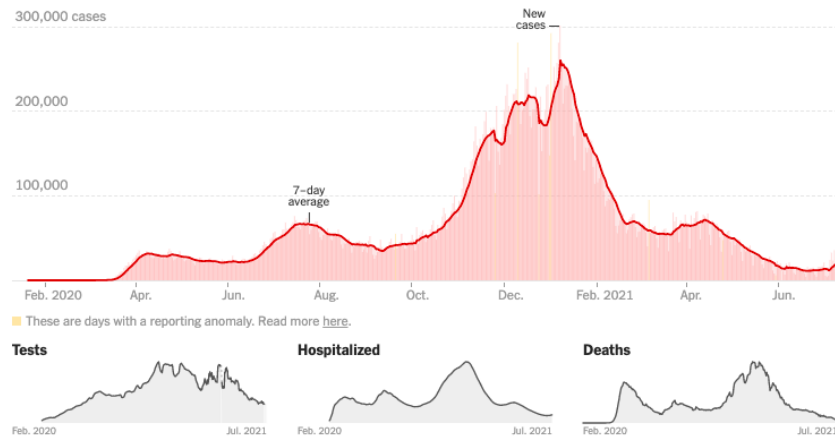
We will use math and stats in the following four contexts:



ELECTIONS



MONEY MATTERS



EPIDEMICS



COMMUNICATION

Tools

We will use the following tools for this class

- Canvas– the go to place for course info and assignments
- Edfinity - for before class assignments and multiple choice / short answer homework
- Gradescope – for additional “written” homework and quizzes
- PollEverywhere – for answering questions in class
- Piazza – online forum for questions about homework and classwork
- Google spreadsheets – for analyzing data
- Google Colab Python – for making plots and doing fancier data analysis
- New York Times and other media - for intro articles

You are not expected to know how to use any of these in advance!

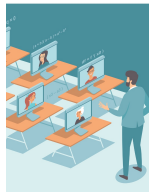
Class Structure

Before Class



- Check Canvas under the class date for instructions
- Watch short video(s) or read article(s)
- Do before-class assignment on Edfinity

During Class



- Take notes using skeleton notes posted on Sakai
- Answer clicker questions on PollEverywhere
- Work problems and discuss ideas in groups
- Ask and answer questions
- Complete individual / group quiz (once every 3 or 4 weeks)

After Class



- Check Canvas for filled in notes and recording of class
- Work homework problems on Edfinity and on Gradescope
- Attend office hours and ask questions on Piazza

Help

- In class help from instructor and ULAs
- Office hours – see Piazza for updates
- Math Help Center (free, open M – F)
- Learning Center Tutoring, (free. open Tues, Wed, Thurs evenings)
- The Learning Center Academic Coaches
- List of private tutors available at math.unc.edu
- Peers

Honor Code

For homework, in-class problems, and before-class assignments

- You are welcome to use books, calculators, computers, and other resources (that don't do your work for you!)
- Collaboration with other students is welcome
- Collaboration should benefit the learning of all involved
- Copying or trading answers is a violation of the honor code

For in-class quizzes

- Collaboration is not allowed on individual parts, but is allowed within groups on group parts
- Closed book and notes unless otherwise specified
- Calculators are allowed unless otherwise specified.
- Some use of computers (e.g. spreadsheets) may be allowed as specified

If in doubt about what is permitted on an assignment, please ask!

Grades

- 10% Participation (PollEv in class, surveys, pre- and post-test)
- 10% Before class assignments
- 30% Weekly homework assignments
- 30% Quizzes
- 20% Final Project

Getting Started

To prepare for class on Wednesday, August 18, go to Canvas

- The Start Here tab will get you oriented to the class
- Read the Syllabus and sign up for the tools you need for the class
- Find the page for Wednesday's class and look at the To Do list

END OF VIDEO

Welcome to MATH 115 / STOR 115 / BIO 115 / PSYC 115!

First day details:

- Masks
- Zoom
- Adding this class

Tour of Canvas:

- Home
- Course logistics video
- Syllabus
- What to do before and after each class

Questions about class logistics homework, office hours, etc?

Please introduce yourself to someone you don't know yet.